

RESTORATION DESIGN FOR CASSIOBURY PARK

A HERITAGE LOTTERY FUNDED PARKS FOR PEOPLE STAGE 2 PROJECT



3 WATER PLAY AND HUB BUILDING

3A) Showing proposed hub building and enhanced play areas



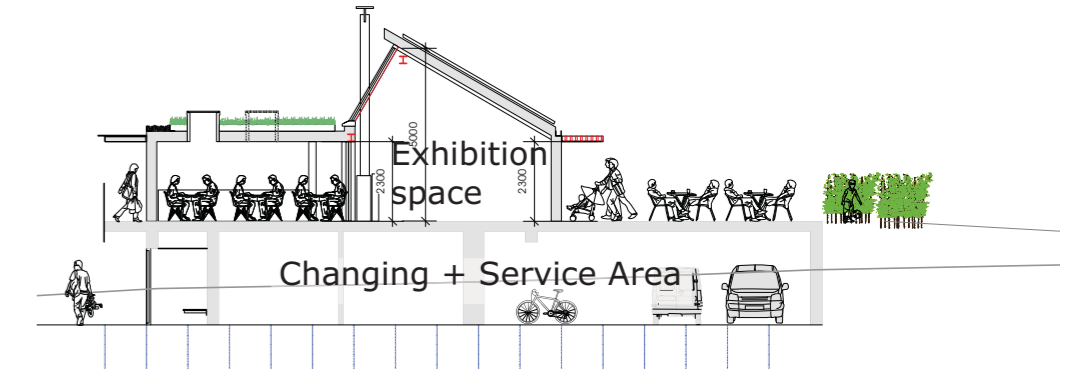
Rationale:

The main concept is creation of a new hub for the lower part of the park, plus enhancement of existing play provision:

- A new hub building serving the pools, sports facilities and volunteers plus providing an alternative café. The building will embody green/sustainable architecture techniques and will be built into the valley side to integrate with the landscape
- An improved setting – restoration of historic parkland elements
- Enhancement of the existing water play and play area to relate to its wider river landscape – a more naturalistic design
- Links to the wider access and circulation routes in the park



Visualisation of proposed Hub building



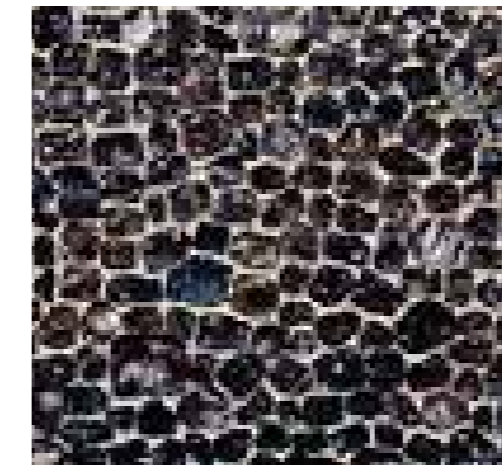
Section through proposed Hub building looking east



Flint gabion walls



Cafe culture and dining



Knapped flint finishes



Hub sedum green roof



Cedar cladding to Hub



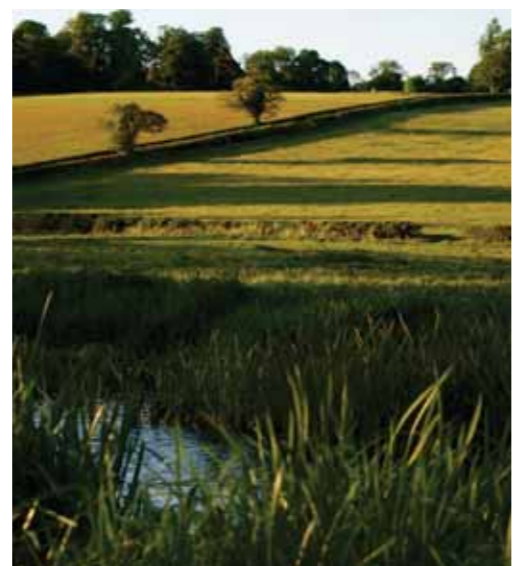
Retain valued 'Metroland' elements



Chalk stream aquatic forms



Chalk landscape planting types



Chalk valley landform/terracing



Robust prairie style planting



Natural Play/water play



Water play



Natural Play/water play

THE LONE CEDAR WETLANDS WITH D 'HIDDEN HISTORY' HEART OF THE PARK
 FORMAL APPROACH TO THE LOST HOUSE RIVER GADE VISUAL FOCUS
 GREEN 21ST 'OF ITS CENTURY' TIME' LEGACY PLAY SPACES & PLACES TO MEET & TO BE MINI RAILWAY



The site of the present play area circa. 1890 - open parkland, with the now lost Cassiobury House forming the background



Chalk stream natural play forms



Natural Play/riverine forms



Natural Play



The lone cedar forms a dramatic, iconic background element to the hub and play area



LOTTERY FUNDED

Historic images of Cassiobury sourced from Watford Museum and Herts HER

RESTORATION DESIGN FOR CASSIOBURY PARK

A HERITAGE LOTTERY FUNDED PARKS FOR PEOPLE STAGE 2 PROJECT



4 VIEWS : LIME AVENUE, MILL AND WESTERN APPROACH



Remnant vista to lost house and watermill at foot of Lime Avenue



Sensitive landscape management could be used to interpret the view

GRAND WESTERN HISTORIC VIEWS SUMMER
 APPROACH SUNSET
 GIVE THE LIME AVENUE A FOCUS AGAIN
 WATERMILL RUINS CELEBRATE & REVEAL HIDDEN GEMS
 UNLOCK SPIRIT OF THE PLACE AND UNDERSTAND ITS EVOLUTION



Historic view of the Lime Avenue



Restore the formal character of the avenue



The former mill in the early 20th century



Restoration of open parkland character

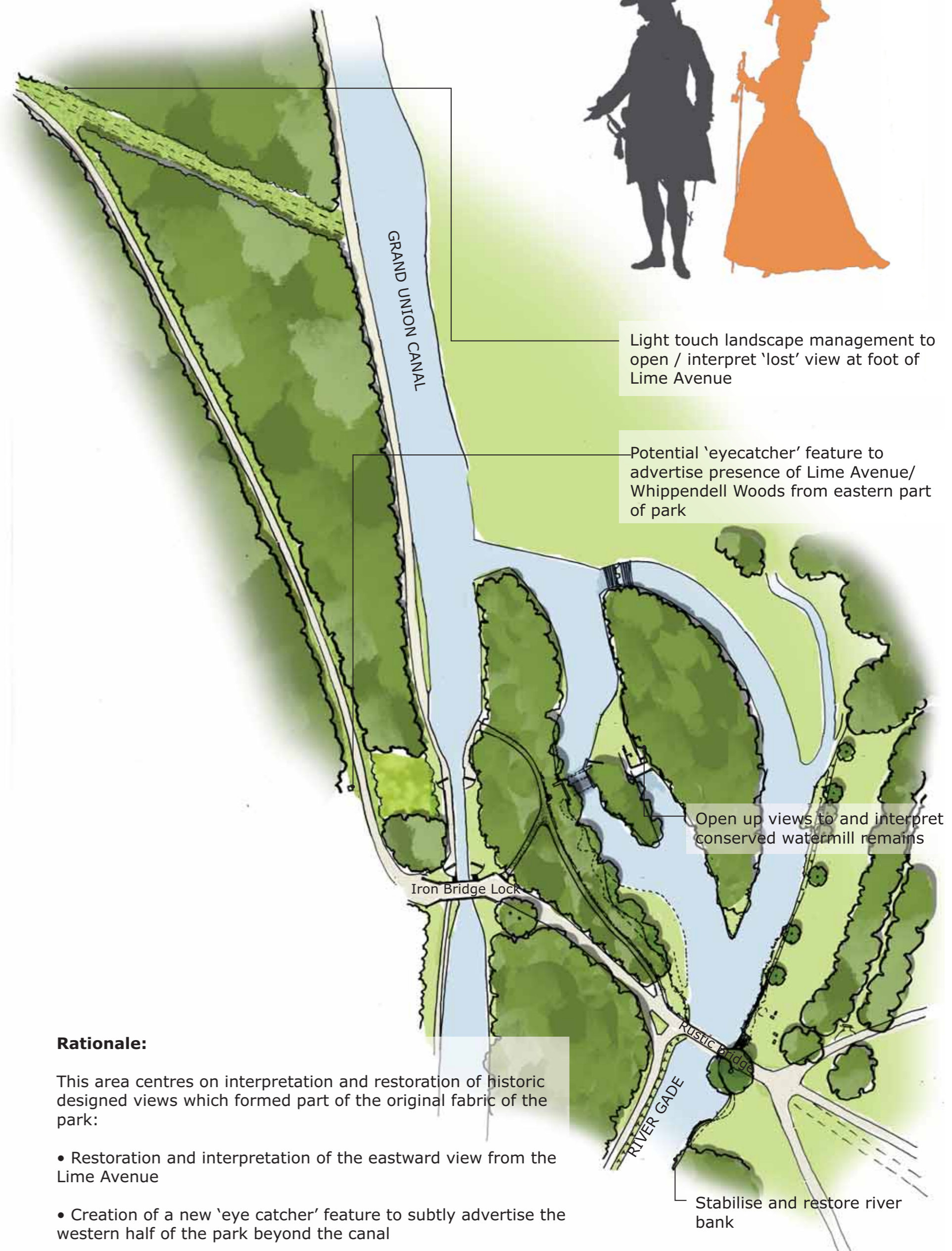


What remains today at the mill site - one of Cassiobury's 'hidden jewels' - a focus for interpretation



Restored rustic bridge and view to mill ruins

4A) Showing restoration proposals



LOTTERY FUNDED